



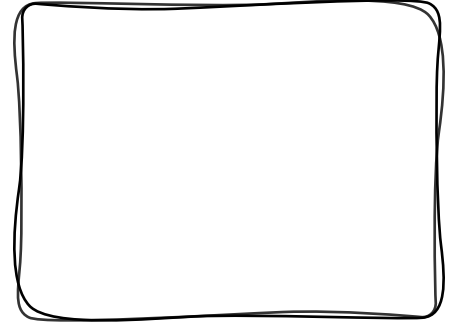
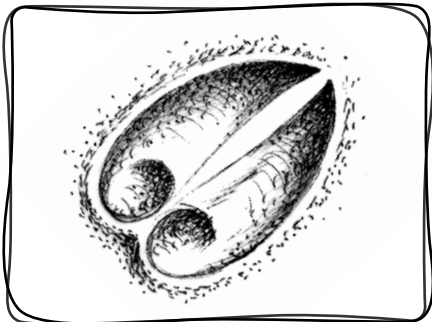
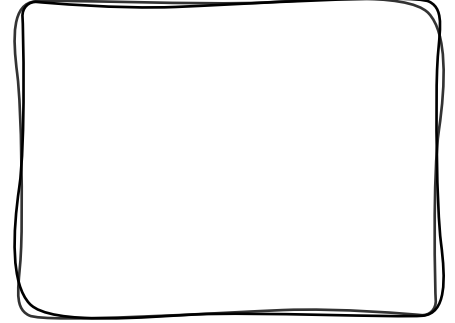
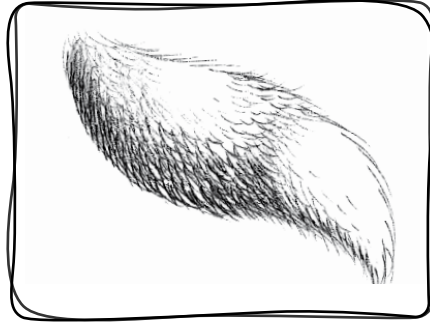
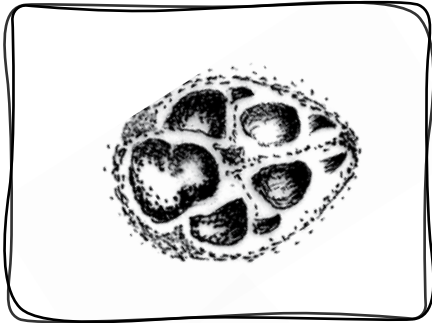
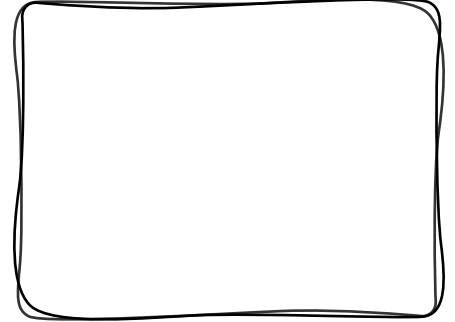
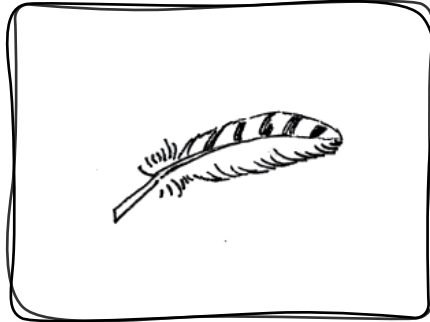
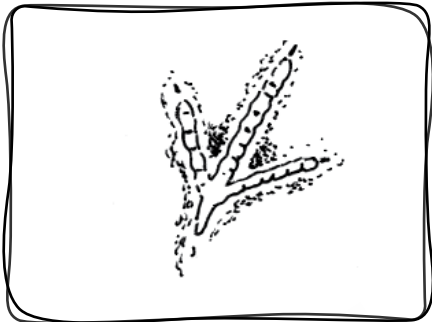
SULLE TRACCE DEGLI ANIMALI DEL BOSCO 1

Just
cosmesi & natura

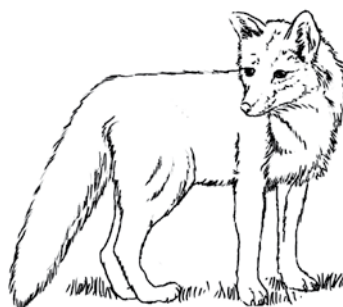
Quando gli animali camminano su un terreno morbido, per esempio sabbia o fango, lasciano le impronte. Sono tracce molto importanti perché rivelano non solo la presenza dell'animale ma anche la specie a cui appartiene.

Osserva attentamente le impronte e i dettagli del corpo qua sotto: riesci a riconoscere a quali animali appartengono?

Ritaglia gli animali in fondo alla pagina e incollali al posto giusto.



CERVO



VOLPE



GHIANDAIA